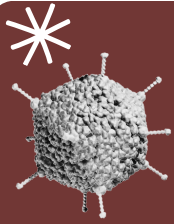


WASTEWATER SURVEILLANCE ISN'T JUST ABOUT COVID

Markers of the pathogens listed below have already been detected in untreated wastewater in the US. Many have been incorporated into ongoing wastewater surveillance programs run by state and local health departments and other groups. The ones denoted with an ***asterisk*** are slated for inclusion in the CDC's National Wastewater Surveillance System panel of core pathogen targets.

Other pathogens investigated but not part of programs yet include arboviruses (such as West Nile, yellow fever, and Zika), *Campylobacter jejuni*, Shiga-toxin-producing *Escherichia Coli*, and *Shigella* bacteria.



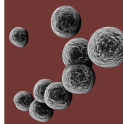
ADENOVIRUS 40/41

Common cause of acute gastroenteritis in children that is challenging to diagnose due to a wide variety of symptoms



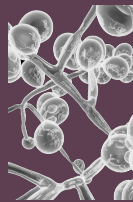
ANTIMICROBIAL RESISTANCE

One of the world's most urgent public health problems, antimicrobial resistance results in infections that are difficult, if not impossible, to treat



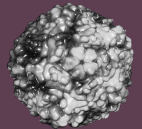
CANDIDA AURIS

Potentially deadly fungal pathogen that is often resistant to multiple drugs and can cause outbreaks in healthcare settings



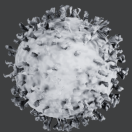
ENTEROVIRUS D68

Causes mild to severe respiratory disease and, less commonly, a serious neurological condition known as acute flaccid myelitis



HUMAN METAPNEUMOVIRUS

In the same family as RSV, infections are relatively common but underdiagnosed and can cause bronchiolitis and pneumonia



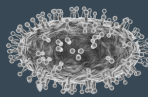
INFLUENZA

In combination with pneumonia, consistently one of the top ten leading causes of death in the US; causes mild to severe seasonal epidemics



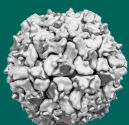
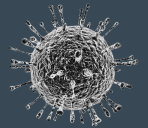
MPOX VIRUS

Causes a rash, blisters, and flu-like symptoms, with infants and immunocompromised individuals at risk for serious illness and death



NOROVIRUS

Very contagious virus that is the leading cause of vomiting, diarrhea, and foodborne illness in the US, with common outbreaks in winter



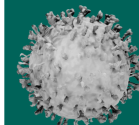
POLIOVIRUS


Enterovirus that causes asymptomatic disease in most infected people, but paralysis and/or death in some cases



RESPIRATORY SYNCYTIAL VIRUS (RSV)

Common respiratory virus that can cause severe disease in infants and older adults



 Expected to be included in the National Wastewater Surveillance System core pathogen panel.